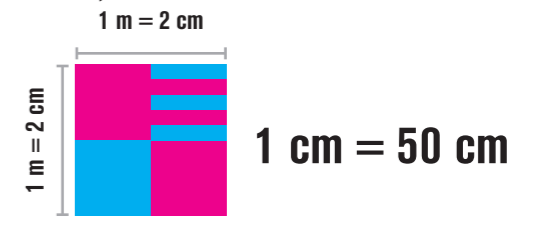


- STRÖMBRYTARE
- ELUTTAG Ⓜ EL UTE/BELYSNING
- INFÄLLD SPOT I TAK
- INFÄLLD HÖGTALARE I TAK

BRUTTOAREA:
58,5 m² (plan 1)+30,375 m² (loft)=88,88 m²

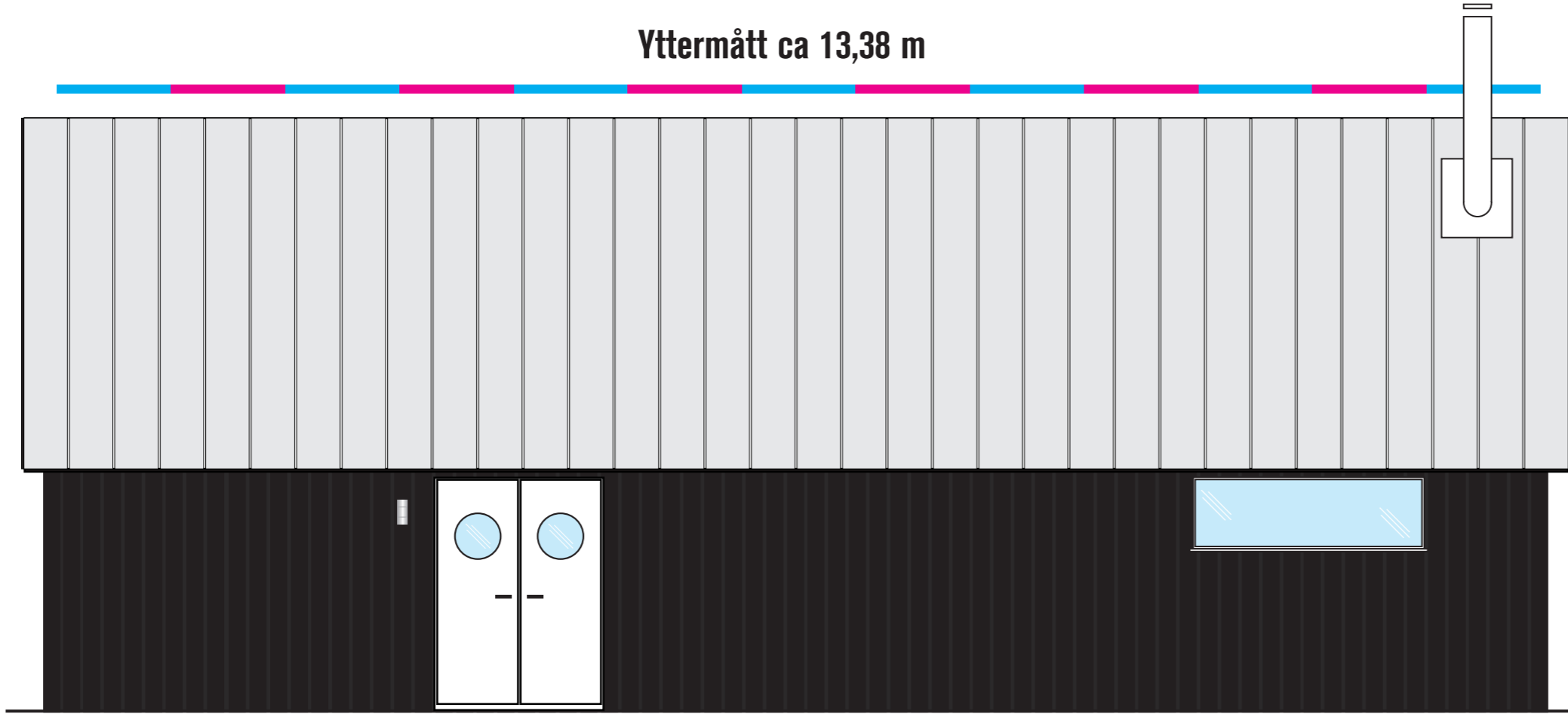
BYGGNADSAREA:
65,3 m² YTTERVÄGG: 4,5+14,5 cm=19 cm (se detalj i bilaga)

BOSTADSAREA:
74 m² (55,+20,7)

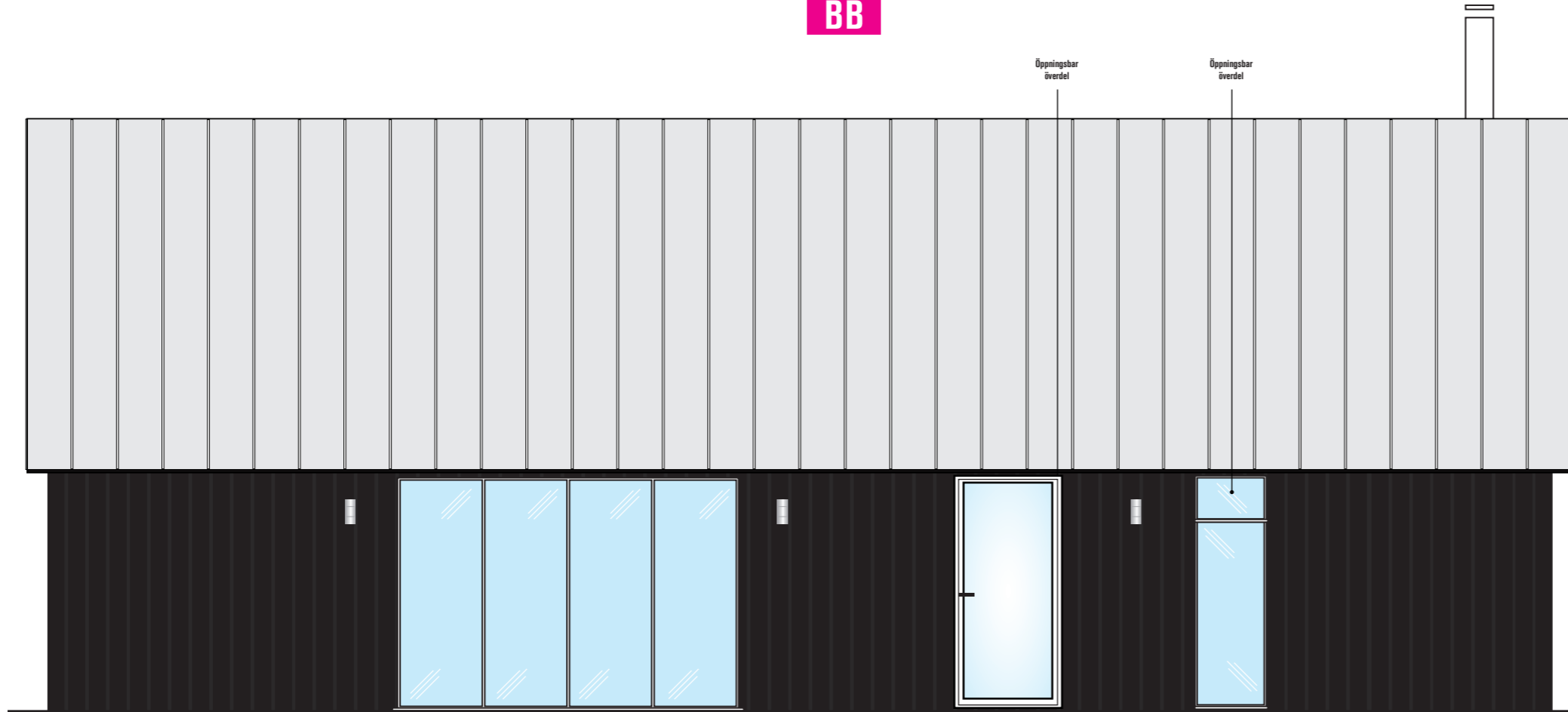


Yttermått ca 13,38 m

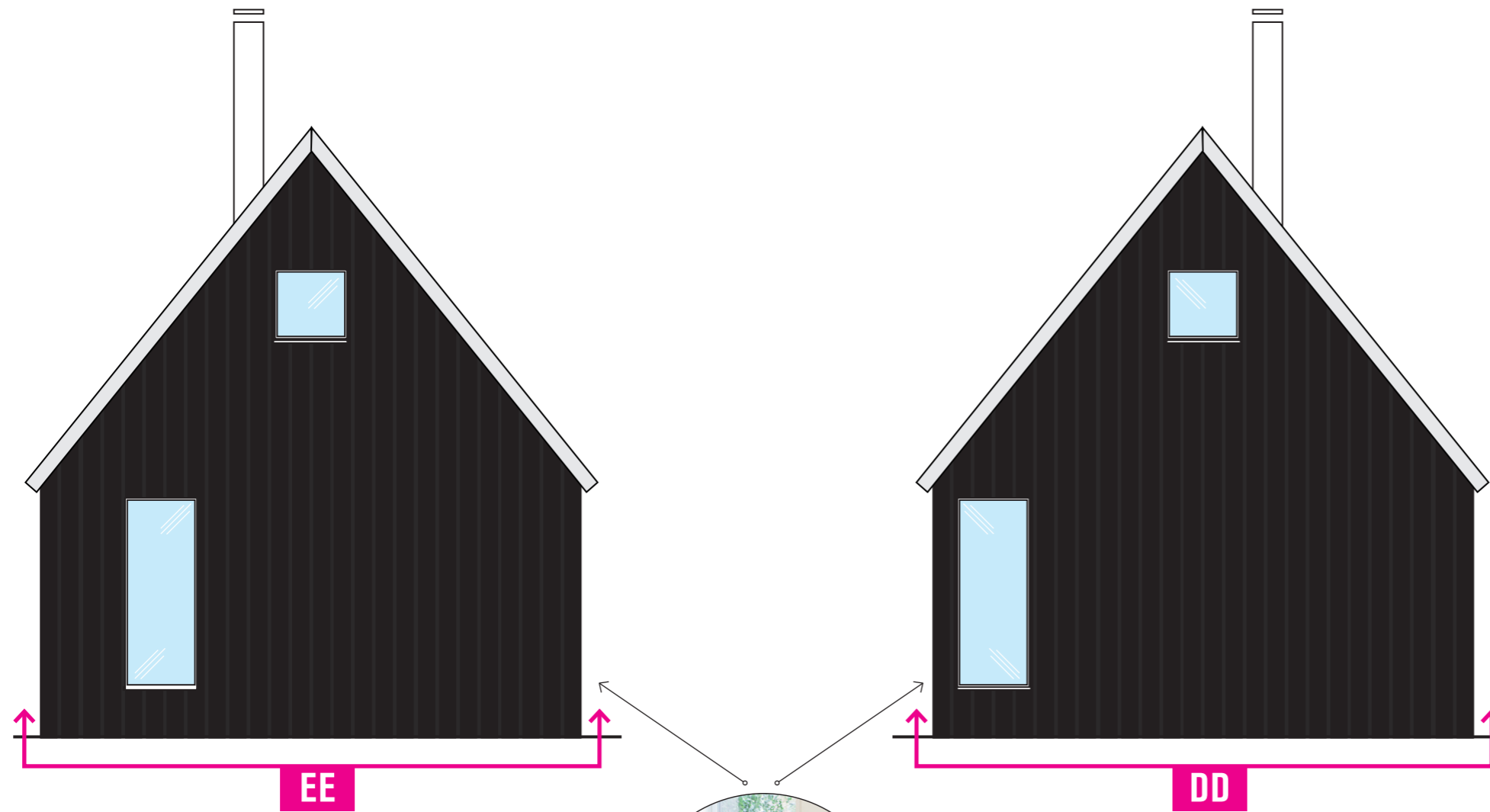
Yttermått ca 4,88 m



BB



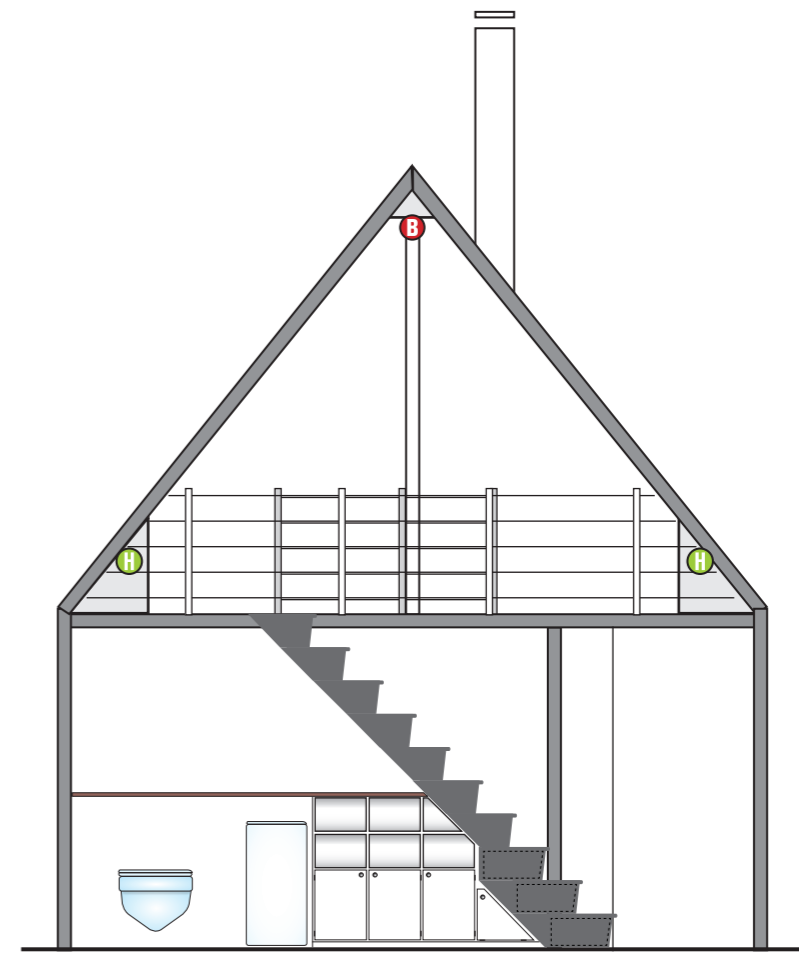
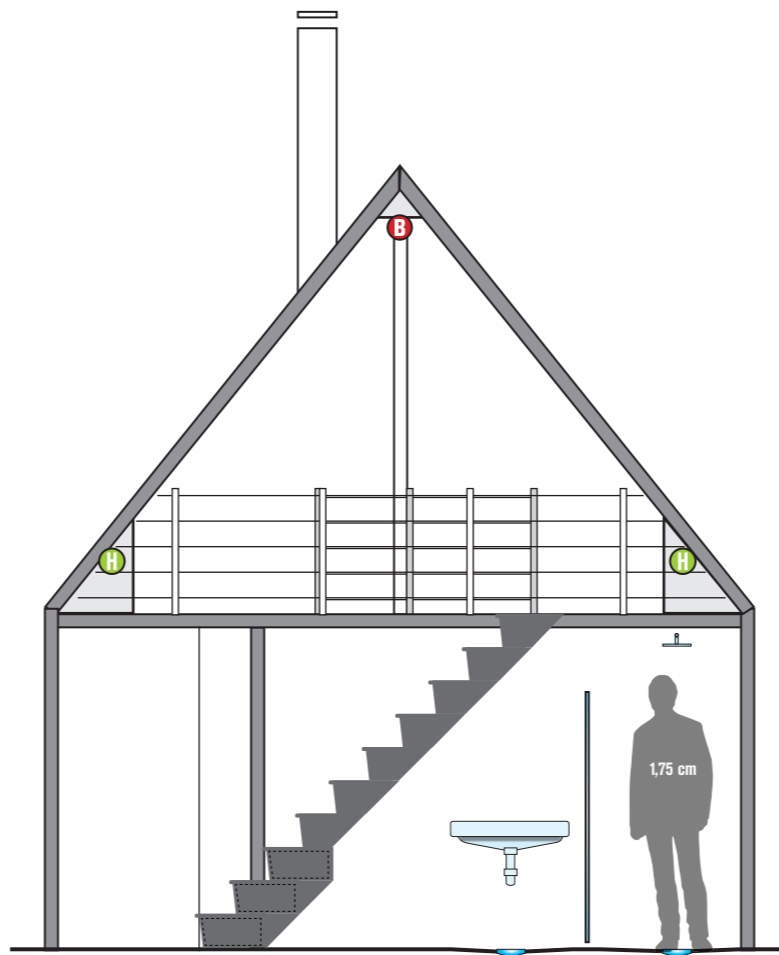
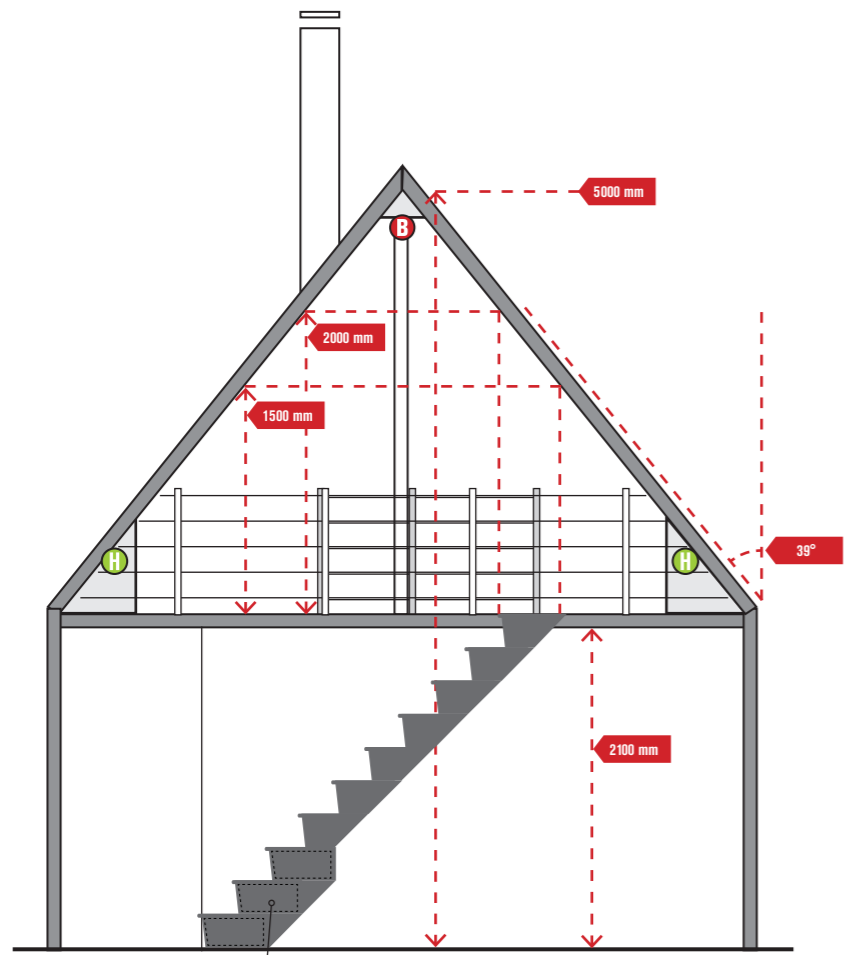
CC



Fönsternisch

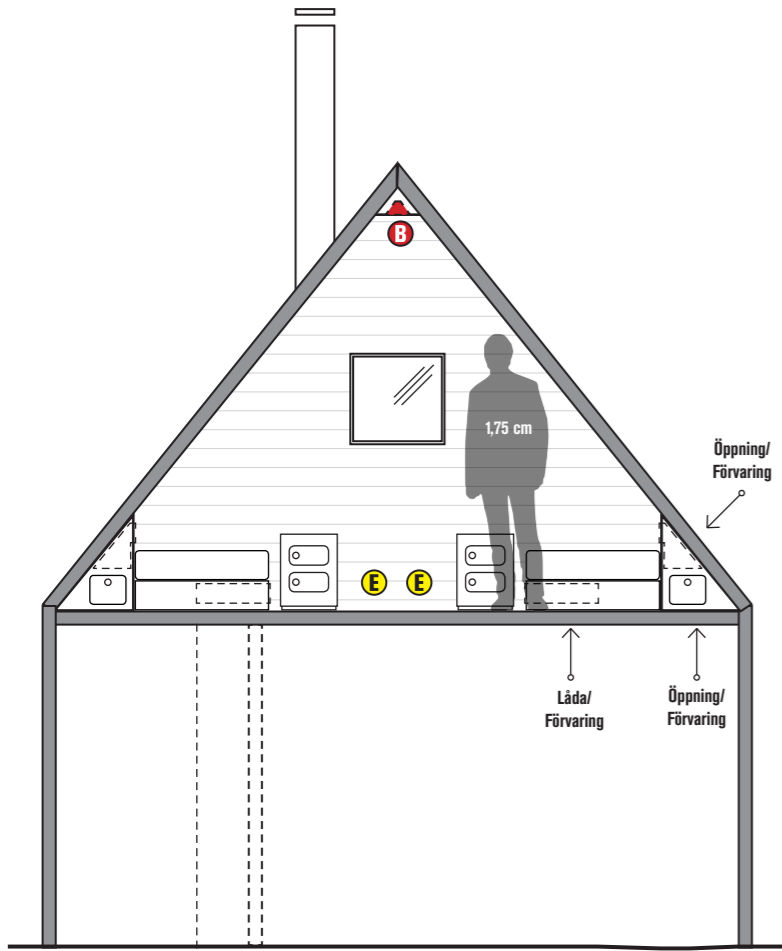
IDÉ



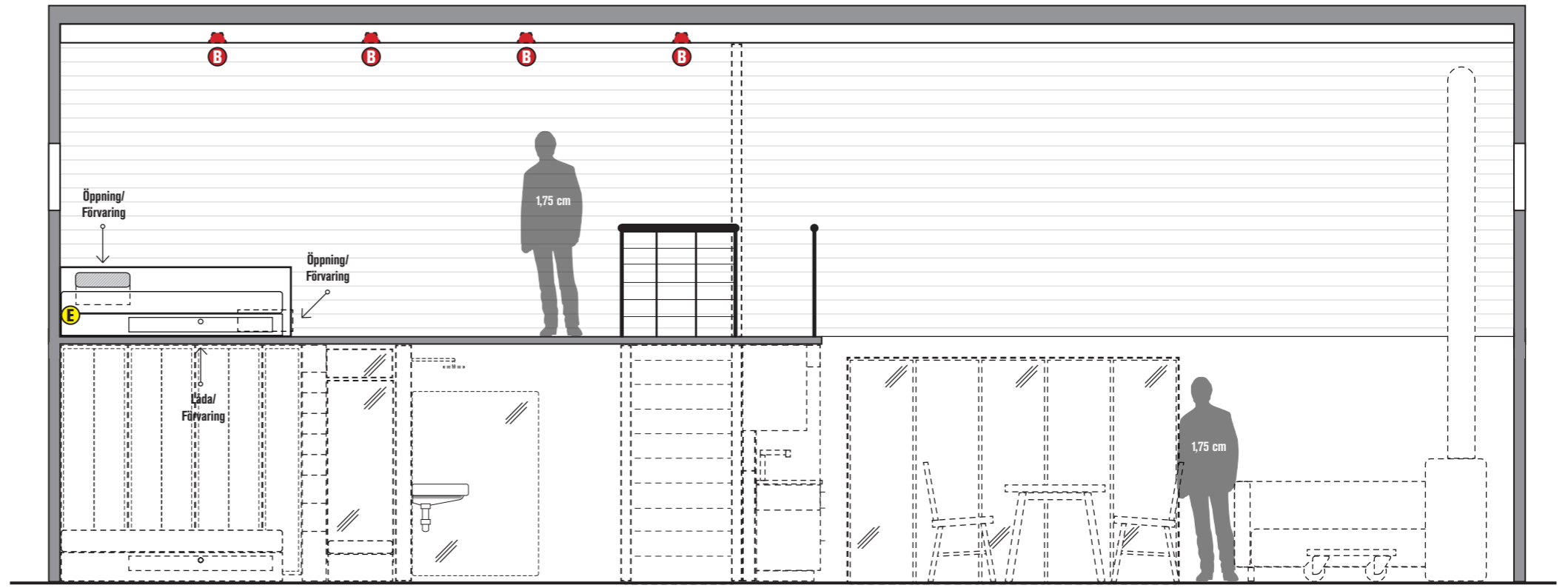


IDÉ

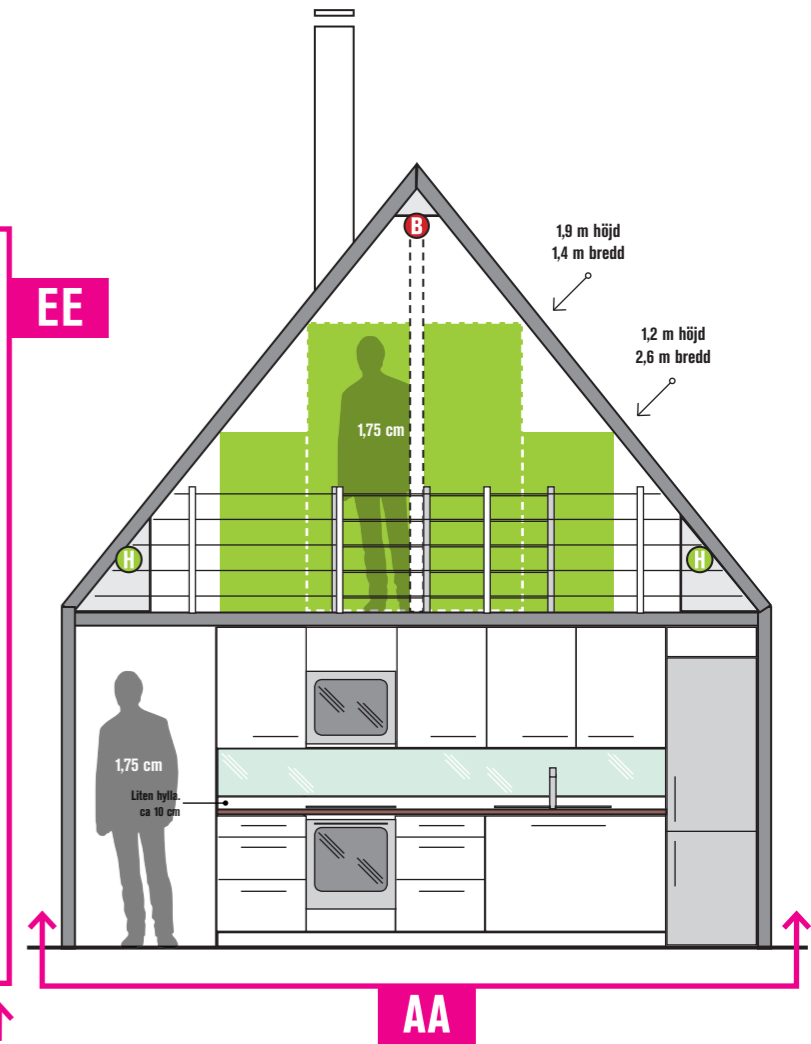
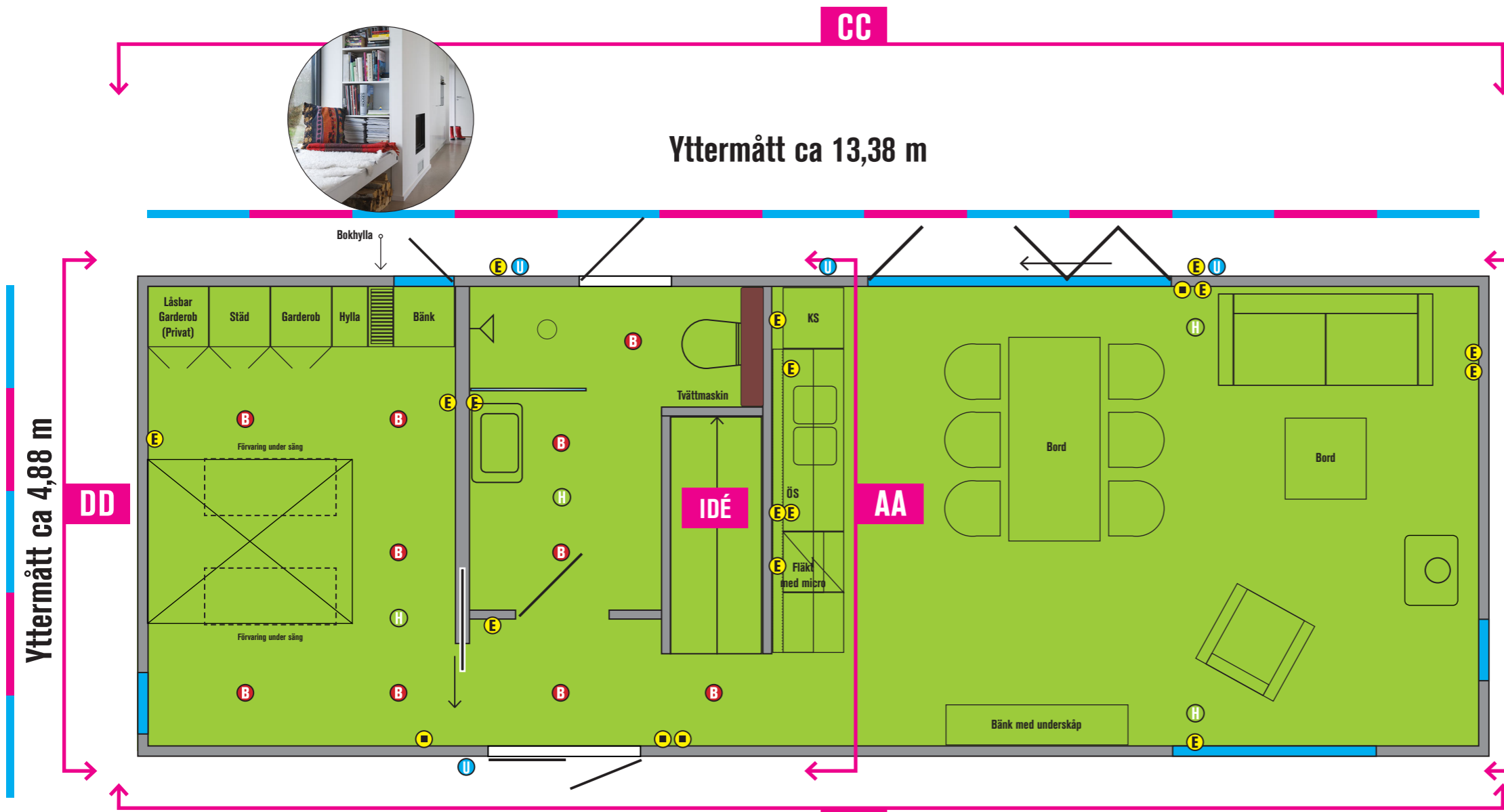




GG



FF



- STRÖMBRYTARE
- ELUTTAG Ⓜ EL UTE/BELYSNING
- INFÄLLD SPOT I TAK
- INFÄLLD HÖGTALARE I TAK

BRUTTOAREA:
58,5 m² (plan 1)+30,375 m² (loft)=88,88 m²

BYGGNADSAREA:
65,3 m² YTTERVÄGG: 4,5+14,5 cm=19 cm (se detalj i bilaga)

BOSTADSAREA:
74 m² (55,+20,7)

